



Batoi WorkforceConnect

Empower, Engage, Transform—All from One Platform

A dynamic community portal solution that combines job boards, event publishing, and content management into a single, easy-to-use platform.

batoi.com/products/workforceconnect



© Batoi - www.batoi.com

The Challenge of Community Engagement

Why Community Engagement Matters



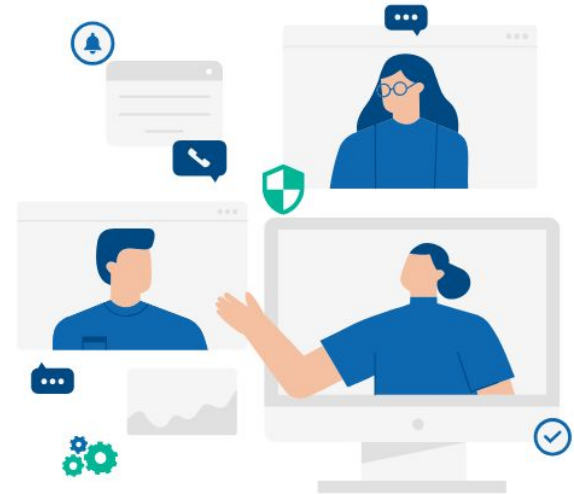
Communities struggle to maintain a cohesive platform for job listings, events, and content.



Managing community activities and tracking engagement can be challenging without integrated tools.



Security and customization are often limited in conventional platforms, affecting user experience.



Batoi WorkforceConnect - The Comprehensive Solution

An Integrated Portal for Workforce Development and Community Engagement



Job Boards

Manage job listings with NLX Job Feed integration for current employment opportunities.



CMS Tools

Publish community resources, announcements, and articles easily.



Event Publishing

Create, promote, and manage community events like job fairs, workshops, and networking sessions.



Secure Management

Benefit from enterprise-grade security, including MFA and SSO.

Key Features

Core Features of Batoi WorkforceConnect

- Job Boards and NLX Integration**
Seamlessly update and manage job postings.
- Event Management**
Efficient tools for organizing and promoting events.
- CMS**
Flexible content management to create and share community resources.
- Multi-Level Community Roles**
Assign roles to manage different community areas.
- Custom Branding**
Personalize your platform to reflect your community's identity.
- Analytics & Reporting**
Track job applications, event attendance, and engagement metrics.
- Robust Security**
MFA, SSO, and ADA compliance for safety and accessibility.

Who Can Benefit from Batoi WorkforceConnect?

Tailored for a Wide Range of Communities



Workforce Authorities

Manage job listings and events to support local workforce initiatives.



Educational Institutions

Provide job boards and publish career-related events and workshops.



Economic Development Agencies

Facilitate community engagement through organized events and targeted content.



Community Development Programs

Foster engagement through integrated tools that bring people together.

Integrations for Batoi WorkforceConnect

Expand Your Reach with Seamless Integrations



Internal Integrations

Connect with Batoi Bridge to enhance collaboration on events and community initiatives or Batoi RAD for custom application development.



External Integrations (Enterprise only)

Seamlessly link with Zoho CRM and other third-party platforms.



Batoi WorkforceConnect in Action

Experience the Power of Comprehensive Community Tools

Batoi WorkforceConnect delivers an intuitive interface, extensive job board features, event management, and robust community content tools—all tailored for dynamic community growth.

The screenshot displays the Batoi WorkforceConnect interface. At the top right, there are buttons for "View Pending Jobs" and "Post a Job". Below these is a search bar with a "Search" button. The main content is a table of job listings with columns for Title, Industry, Location, Company, Status, and Action.

Title	Industry	Location	Company	Status	Action
QC Executive	Software Developer	Bechtelsville, Pennsylvania, USA, 56456	Adame Inc	Pending Approval	
Insurance Sales Agents	Medical Laboratory Technologist				
Education Teachers, Postsecondary	Data Scientist				
Database Administrators	Software Developer				
Park Naturalists	Content Creator				

Below the table, a detailed view of a job listing is shown. It includes a "Highlights" section with fields for Vacancy (15), Job Nature (Unspecified), Shift (Unspecified), Hours/week (Unspecified), Salary (\$), and Expires on (Dec 16, 2024). The "Description" section contains the text "C11". The "Company Information" section lists "N/A" for several fields. The "Job Requirements" section includes Minimum Education (Basic Education), Experience (Unspecified), License (Unspecified), and Training (Unspecified). The "Job Location" section lists City (Southfield), State (Michigan), Country (USA), and Zipcode (48034). An "Apply Now" button is located at the bottom right of the detailed view.

Why Choose Batoi WorkforceConnect?

The Complete Platform for Community Empowerment



All-in-One Solution

Job boards, events, CMS, and analytics in one platform.



Scalable

Flexible enough to grow with your community's evolving needs.



Community Insights

Track engagement metrics to better serve your audience.



Comprehensive Integration

Seamlessly connect with other tools and services for a holistic experience.



Enterprise-Grade Security

Equipped with advanced security features to protect your community's data.

Subscription Plans

Flexible Plans to Meet Your Community's Needs

Plan	Essential	Premium	Enterprise
Customizable web template, CMS, job board, hosting, domain name and SSL certificate	✓	✓	✓
NLX Job Feed Integration and daily monitoring	X	✓	✓
Multi-level Management Roles	X	✓	✓
Enhanced reporting on user and job activities. Advanced SEO	X	X	✓
Custom integrations	X	X	✓
Employer Registration and Paywall	X	X	✓
10 hours of monthly customization and development support using the Batoi RAD Platform	X	X	✓
Support in blogs and events publishing	X	Up to 4 posts/mon	Up to 8 posts/mon

Annual Commitment Discount: Enjoy two months of service free with a yearly subscription.

Ready to Empower Your Community?

Get Started with Batoi WorkforceConnect Today!

batoi.com/products/workforceconnect



Schedule a Demo

batoi.com/about/schedule



Contact Us

batoi.com/about/contact